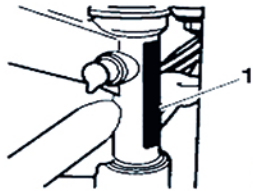


## VIN NUMBER

In some cases, correct selection of a part depends on matching of the vehicle identification number (VIN) of the motorcycle to a range of VIN numbers in the catalogue. It is essential that the VIN number be correctly matched with the information given in the catalogue in order to make correct selection of spare parts. Generally, only the final six digits of the VIN number will be required. The VIN number can always be found in two places on the motorcycle.

- **OUTSIDE USA:** The vehicle identification number is stamped into the right side of the steering head, and can also be found on the VIN plate which is riveted to the frame immediately behind the steering head.
- **USA:** The vehicle identification number is stamped into the right side of the steering head. The vehicle identity number is also printed on a label on the steering head.



1. VIN Number

### 2007 Model Year Bonneville, T100, America, Thruxton, Scrambler & Speedmaster

In some instances, where a VIN break is shown against a part (eg, up to a VIN or from a VIN), it will now also be necessary to check for a factory build code to ensure the correct part is selected. The factory build code can be found on the VIN plate for all bikes except those built for America, Taiwan and Canada. For American, Taiwanese and Canadian bikes this detail can be found on a small sticker located above the steering lock. The VIN plate will bear the code 'F2' or 'F4' in its bottom-most field (shown arrowed below). In the case of American, Taiwanese and Canadian bikes, the same 'F2' or 'F4' codes can be found on the small square sticker located above the steering lock.



1. VIN Plate

Therefore, if an entry such as the example below is shown in the parts information, refer to the VIN plate, check the VIN number and also the factory code and select part corresponding to the factory code and then the VIN:

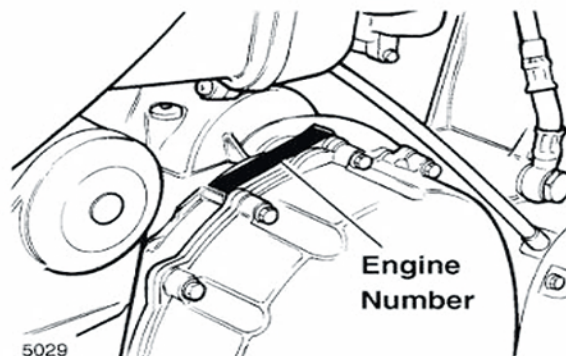
**Example VIN entry from the parts information:**

- ▶ 2851230-F2
- ▶ 2851234-F4

For example; if the factory code on the VIN plate or sticker is F2, then select parts according to the line shown against the F2 VIN. If the factory code is F4, parts should be selected according to the line shown against the F4 VIN. Where no F2 or F4 entry is made against a VIN break, then parts need only be selected according to VIN number.

## ENGINE NUMBER

In some cases, correct selection of a part depends on matching of the engine number of the motorcycle to a range of engine numbers in the catalogue. It is essential that the engine number be correctly matched with the information given in the catalogue in order to make correct selection of spare parts. The engine number can always be found stamped on a casting feature in the upper crankcase. The feature is located just above the clutch cover on the right hand side of the motorcycle.



5029